

# Statement of Qualifications | 2024

State of California License No. 528322, A, B, and C-10.

State of Nevada License No. 20222614066

State of Arizona License No. 330370 B-1 and No. 330371 C-11

Experts in renewable energy, civil construction  
and technology infrastructure

## Renewable

Solar | Wind | BESS | EV Charging | Substations



A Division of BEI Construction, Inc.

Technology | Audio/Visual | Security | Wireless



# Company Overview



BEI Construction has provided exceptional construction services while prioritizing safety, quality, and customer satisfaction since 1988.

## A 35-year track record of success

BEI Construction demonstrates the value of long-term relationships, both internally and externally, in producing a superior project. Our in-house capabilities allow us to deliver highly competitive, quality construction work.



### Construction

- Renewable Energy
- Technology Infrastructure
- Civil
- Electrical
- Design/Build



### Civil Construction

- Directional Drilling
- Trenching
- Vacuum Excavation
- Pier Driving
- Concrete
- Substations



### Project Management

- Responsible for all aspects of the project
- Management/Operations meetings held weekly
- Handled in phases or as a complete package



### Electrical Construction

- Commercial / Industrial
- Tenant Improvement
- Commercial / Utility-Scale Solar and Wind
- Hot-Line Services
- Decommissioning Services



Exceptional civil engineering and electrical contractor building solid foundations for a greener future

## Renewable Energy Construction



A Division of BEI Construction, Inc.

**Technology**

**Infrastructure**

**Audio/Visual**

**Security**

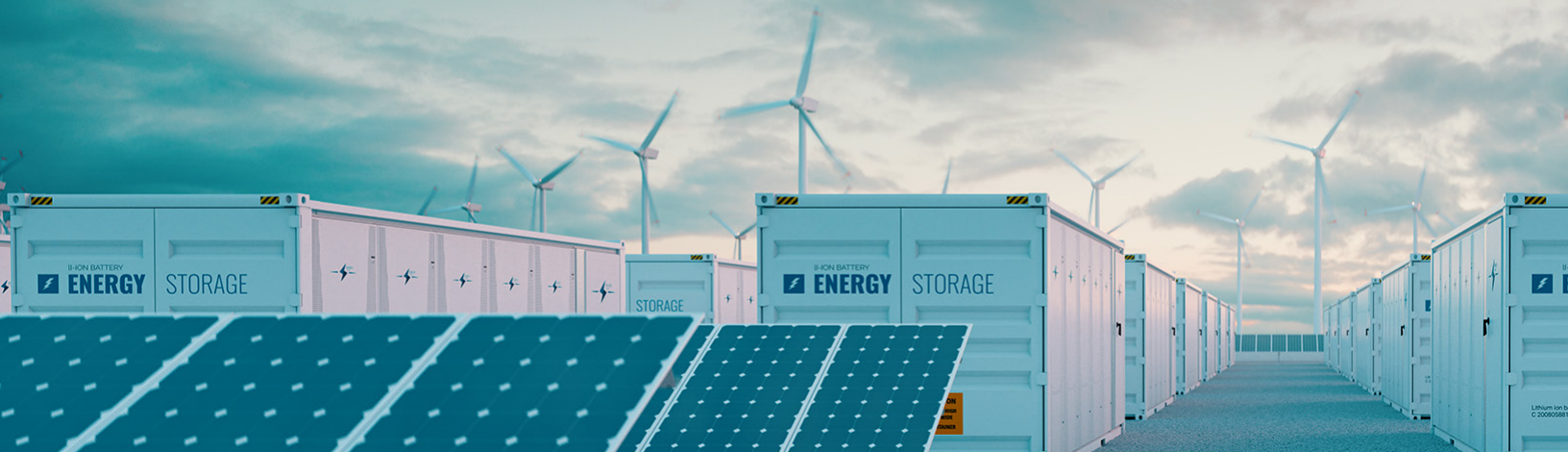
**Wireless**

**Decommissioning**

Designing and installing all aspects of your renewable or technology infrastructure project, BEI Construction prides itself on streamlining the process, enhancing collaboration, and saving significant time and money for our clients. Our electrical expertise starts with our in-house engineers and designers and flows to our in-the-field union labor, providing end-to-end electrical construction services. Our services include:

- Civil and electrical engineering
- Total project management
- Site preparation
- Project planning and scheduling
- Cost estimating
- Constructibility review
- Construction management
- Commissioning and Testing
- Production analysis
- Regulatory review
- Permitting
- Contractor prequalification
- Bidding and bid analysis
- Contract administration
- Equipment and material procurement
- Support and maintenance

# Renewable Energy — Overview | Services



## Renewable Energy Construction

BEI Construction has been involved in over 2GW of battery storage, solar, substation, wind, and EV charging projects. Our renewable energy systems use the latest technologies and continuously adapt to fit our client's needs, including integrating microgrid and distributed generation solutions.



### Solar

- Canopy PV array solar systems
- Ground mount array solar system
- Grid-tied solar, off-grid solar
- AC and DC electrical work
- Security and fence installation



### BESS

- Complete EPC services
- Civil, Structural, and Electrical construction
- Extensive experience with both AC and DC BESS systems
- Early stage value engineering for conceptual designs to maximize space and economics
- Proficient at building all aspects of BESS; behind meter, front of meter, brownfield, greenfield, PV and storage, and stand-alone
- BESS highest level of QA/QC standards based on over a Gigawatt of installation experience
- Utilization of construction management tools for client and investor project reporting



### Substations

- Electrical Generation
- Electrical Transmission
- Distribution Systems
- Civil, Structural, and Electrical construction
- Complete EPC services



### EV Charging

- Level 2
- Level 3 - DC Fast Chargers
- Single Port Chargers
- Dual Port Chargers
- Fleet Charging



### Wind

- Direct Drive Turbines
- Gearbox Turbines
- Utility-Scale Wind
- Multi-Turbine wind farms



# Renewable Energy (SAMPLE PROJECTS)



Southern California Energy Storage  
537.5 MW/2.15 GWh across 3 sites  
**BESS**



Aquamarine | Stratford, CA  
250 MW solar, 1MW/2MWh BESS, 230kV  
**Substation | BESS**



Goleta Energy Storage | Goleta, CA  
60 MW BESS project  
44 Tesla Megapacks  
**BESS**



High Desert | Victorville, CA  
230 kV substations  
US Fish and Wildlife and CA Department of Fish and Wildlife - Desert tortoise protection training  
**Substation**



State Fund Portfolio | Vacaville, CA  
10.6 MW distributed generation across 4 sites:  
Vacaville, Pleasanton, Redding, Sacramento  
**Solar | EV Charging | BESS**



Mountain View Unified School District  
1.6 MW canopy solar across 10 schools  
12 EV charging stations  
**EV Charging | Solar**



# Civil Engineering — Overview | Services



## Experts in civil construction

Civil construction is an integral part of furthering innovation and accessibility. Our civil construction division focuses on the infrastructure: underground and aboveground. We are experts when it comes to getting your project started on the right foot.

- Civil and Structural Engineering
- Site Preparation
- Design/Build
- Construction Management
- Contract Administration

Providing full civil support including site preparation, excavation, foundation construction, substation construction, and structural steel work to support our clients' building, electrical and renewable energy construction projects.

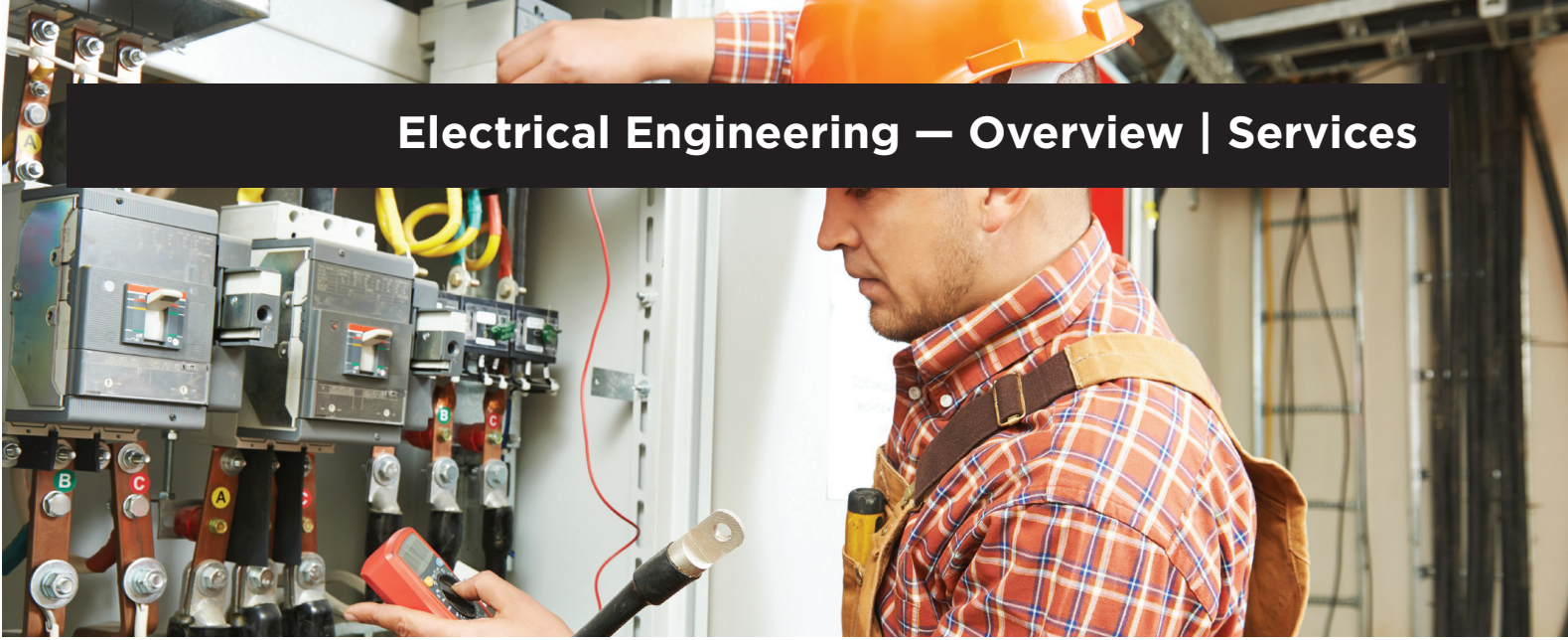
- Directional Drilling
- Trenching
- Vacuum Excavation
- Pier Driving
- Concrete
- Substations

## Union Quality Guaranteed

We're affiliated with the Laborers' International Union of North America (LIUNA), ensuring that our underground and civil work is performed to the highest industry standards of quality and safety.



# Electrical Engineering — Overview | Services



## Excellence in electrical engineering and construction

Setting the standard for electrical engineering and construction excellence for 35 years. From tenant improvement projects to utility-scale energy storage projects, we leverage our exceptional relationships with vendors, utility representatives, and other key stakeholders to make your project successful.

- Constructibility Review
- Construction Management
- Bidding and Bid Analysis
- Electrical Engineering
- Contract Administration
- Design/Build

Delivering complete industrial and commercial electrical construction projects including electrical system upgrades and expansions, production machinery design and installation, tenant improvements, and power and distribution systems. Our services include:

- Commercial
- Tenant Improvements
- Renewable
- Hot-Line Services

## Union Quality Guaranteed

We're affiliated with the International Brotherhood of Electrical Workers (IBEW) and Operative Plasterer's and Cement Masons' International Association (OPCMIA), ensuring that our electrical and concrete work are performed to the highest standards.



## Supporting our local sports community

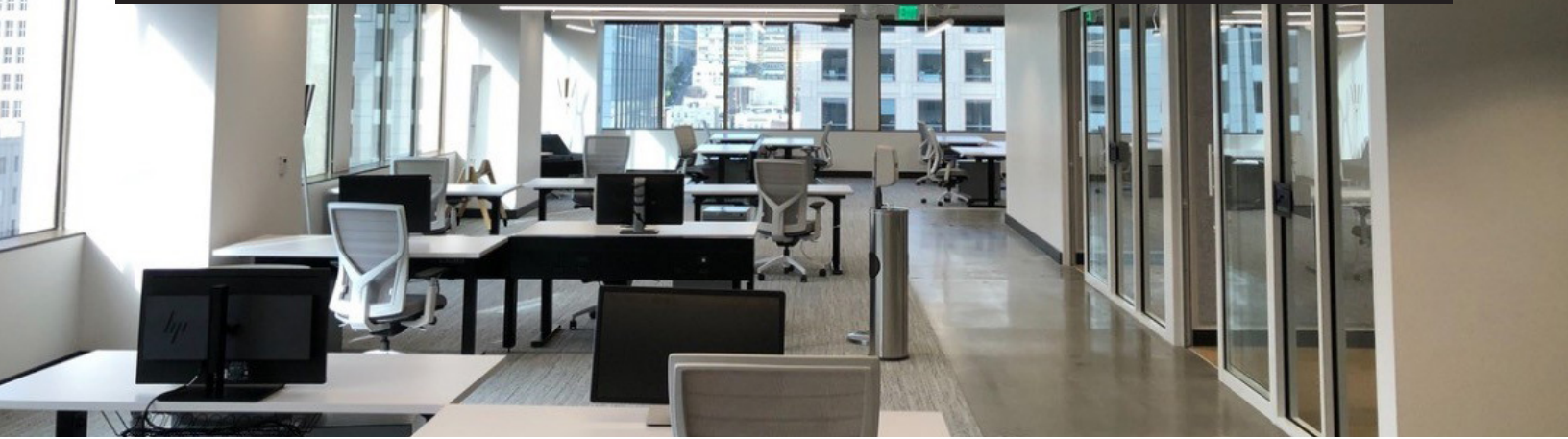


SPORTS BACKHAUL NETWORK





# BEI Connect — Overview | Services



A Division of BEI Construction, Inc.

[BEIconnect.com](http://BEIconnect.com)

Delivering state-of-the-art technology infrastructure for the country's most successful enterprises. Unlike some providers, BEI Connect works with you from the very beginning of projects to help identify your needs and design a comprehensive solution complete with drawings, scope of work, and budget. Specializing in commercial tenant improvement projects and supporting our clients on a local, national, and global basis.

- Design/Build
- Total Project Management
- Installation
- Commissioning and Testing
- Support and Maintenance
- Decommissioning

Providing design / build technology infrastructure, advanced audio/visual, security integration and wireless to some of the world's leading enterprises.

## Technology Infrastructure

- Horizontal Cabling
- Backbone Riser Cabling
- Server Room / IT Room Buildout
- Outside Plant Cabling
- Data Center Buildout
- Decommissioning

## Audio/Visual

- Conference Rooms / Board Rooms
- All Hands Areas / Video Walls
- Distributed Audio
- Sound Proofing
- Sound Masking

## Security Integration Systems

- Access Control
- Cameras and VMS
- Intercom
- Intrusion
- Facial Recognition

## BEI *Connect* (SAMPLE PROJECTS)



Carbon Health | San Mateo, CA  
150+ health care offices in 15 states  
Design/build, project management, cabling,  
IT room and audio/visual  
**Security | A/V | Technology Infrastructure**



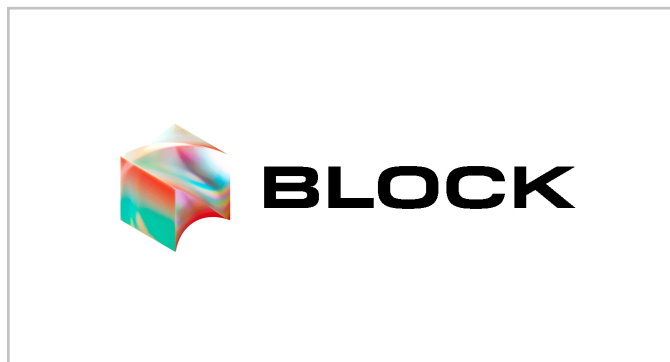
NBC Universal | Los Angeles, CA  
Building automation systems (BAS)  
low-voltage cabling  
**Technology Infrastructure**



Stanford Tri-Valley Hospital | Pleasanton, CA  
Fiber optic network, backbone cabling, network  
cabling and upgrade to data center.  
**Technology Infrastructure**



Hewlett Packard | Palo Alto, CA  
Design, project management, network cabling,  
audio/visual, security, wireless and rack/stack.  
**Technology Infrastructure**



Block, Inc. | Worldwide  
Design, project management, network/security  
cabling and wireless.  
**Technology Infrastructure**



Santa Clara University | Santa Clara, CA  
Design/build, security Integration Campus Wide  
**Security | Technology Infrastructure**

# Representative Client List

Uber



GitHub



stripe



Stanford University




40+ School districts in California and 50+ cities and counties



## Quality Assurance

Quality in the field, in our materials, in our office and support staff, and in our finished projects is the reason we have very high client retention. We use project tracking in Fieldwire to manage field activities, have a quick approval process, and a robust closeout package as the final phase of the project life cycle.


- Project tracking  **FIELDWIRE**
- Daily/weekly scheduling and job cost reporting
- Vendor Approval process
- Materials standards

### Trainings for staff

- Materials specifications
- Incoming quality inspections
- Return-to-vendor tracking and procedures
- AED, CPR and First Aid training
- OSHA training

## Health and Safety

The safety of our employees, the public, and other contractors on the job site is essential. Our rigorous approach to safety flows from management to the field. Our experience modification rate (EMR) number of 0.72 demonstrates our commitment to safety excellence.

- Keeping up to date documentation
- Injury Illness Prevention Plan (IIPP)
- Job Site Assessment forecasting site-specific tasks
- Site-specific safety binders, including site-specific Health and Safety Plans
- Conducts daily or weekly tailgate safety meetings
- PPE provided
- Accident Reporting
- Vehicle tracking and maintenance  **Fleetio**



## Corporate Values

Quality | Innovation | Integrity | Collaboration | Communication

# Unions | Certifications | Affiliations

## Union Quality

Utilizing union affiliations for our projects, BEI Construction benefits from the expertise, professionalism, safety focus, fair treatment and training opportunities that unions provide. Their expertise ensure quality workmanship, adherence to safety standards, and efficient completion of projects.

### Electrician Labor Unions

IBEW 06 (San Francisco, CA)  
IBEW 11 (Pasadena, CA)  
IBEW 40 (Hollywood, CA)  
IBEW 100 (Fresno, CA)  
IBEW 180 (Napa, CA)  
IBEW 234 (Castroville, CA)  
IBEW 302 (Concord, CA)  
IBEW 332 (San Jose, CA)  
IBEW 340 (Sacramento, CA)

IBEW 413 (Santa Barbara, CA)  
IBEW 428 (Bakersfield, CA)  
IBEW 440 (Riverside, CA)  
IBEW 441 (Orange, CA)  
IBEW 477 (San Bernadino, CA)  
IBEW 551 (Santa Rosa, CA)  
IBEW 569 (San Diego, CA)  
IBEW 595 (Dublin, CA)  
IBEW 617 (San Mateo, CA)

IBEW 659 (Medford, OR)  
IBEW 684 (Modesto, CA)  
IBEW 952 (Ventura, CA)  
NorCal Laborer, CA  
SoCal Laborer, CA



## Certifications

### Certifications and Affiliations

State of California License No. 528322, A, B, and C-10.





BEI Construction is a Corporate Member of BICSI, the worldwide association for cabling design and installation professionals.

## TIER 4 TRAINING A Division of BEI Construction, Inc.

Licensing exam preparation and continuing education for businesses and individuals in the telecommunication and information technology industries.



### Topics Covered Include:

- Principles of Transmission
- Electromagnetic Compatibility
- Telecommunication Spaces
- Backbone Distribution Systems
- Horizontal Distribution Systems
- ICT Cables & Connecting Hardware
- Firestop Systems
- Bonding & Grounding
- Power Distribution
- Telecommunications Administration
- Field Testing of Structured Cabling
- Outside Plant
- Audio/Visual Systems
- Building Automation Systems
- Data Networks
- Wireless Networks
- Electronic Safety & Security
- Data Centers
- Health Care
- Residential Cabling
- Project Administration & Execution

Dave Sanders is an award-winning leader in the telecommunications industry. He has been training individuals for over 21 years, offering an opportunity for thousands of students to obtain their BICSI training certification.

### Dave Sanders

RCDD/DCDC/NTS/OSP  
Vice President  
Technical Solutions,  
BEI Construction

## Telecommunications credentials



Registered  
Communications  
Distribution Designer



Data Center  
Design Consultant



Outside Plant  
Designer



Network Technology  
Systems Designer





## A Sister Company of BEI Construction

If our clients are looking for design/build services, BEI Construction will work with Blymyer Engineers, our sister company, to provide complete engineering services.

### **Multidisciplinary engineering services**

Blymyer Engineers has delivered multidisciplinary engineering services to industrial and commercial clients worldwide since 1961. They are licensed in 43 states and have offices in California, Texas, Oregon, Montana, Tennessee, New Mexico, and Europe. They are a great resource that we are able to bring in if projects are looking for a leading engineering firm for their design/build needs.

### **Design/build**

Our relationship began in 2004 when we did our first design/build project together, a 267kW ground mount project at a grapefruit farm in Borrego Springs, California. Since then, Blymyer has gone on to design well over 17GW of ground-mounted fixed and single-axis tracker systems as well as canopy-mounted and roof-mounted systems for utility, agricultural, educational, municipal, and commercial applications, becoming one of the leading engineering firms in the country when it comes to renewable energy.



## A Message from BEI Construction

BEI Construction's electrical and civil expertise is essential to every project that we do. Our quality, innovation, and integrity are part of our core set of values that we bring to each client and project. Whether we are doing a design/build of a complex utility-scale solar and energy storage project or providing technology infrastructure tenant improvements at a hospital, bank or law firm, we deliver for our clients.

Contact us to start the conversation. We'll ask about your project's requirements and challenges, and we'll develop a plan to meet its goals

**David Rantz, Vice President**







# Setting industry standards for data and technology infrastructure

Contact us to start your project with BEI Construction today



**Alameda, California (HQ)**  
1101 Marina Village Parkway  
Suite 100,  
Alameda, CA 94501

**San Leandro, California**  
14072 Catalina Street  
San Leandro, CA 94577

**Chino, California**  
4861 Chino Avenue  
Chino, CA 91710

**BEIConstruction.com**  
(510) 521-3792

Follow us:

 @bei-construction

 @BEIConstruction

 @beiconstruction