



**BEI**  
CONSTRUCTION, INC.

# 2017 Statement of Qualifications

BEI Construction, Inc.—State of California License No. 528322, A, B and C-10



**Underground Construction  
Electrical Construction  
Technology Infrastructure  
Renewable Energy  
Design/Build**

[BEIConstruction.com](http://BEIConstruction.com)



# Company Overview



Since 1988, we've brought a passion for innovation and a commitment to integrity to every project we've taken on.

## A track record of success.

BEI Construction demonstrates the value of long-term relationships, both internally and externally, in producing a superior project. Our in-house capabilities allow us to deliver highly competitive, quality construction work. More than half of our business each year comes from existing clients, and we believe that this single fact demonstrates our integrity and dedication to our work. We believe that proper planning and communication is the key to a successful installation. From contract award to project close out, our team is in constant communication with our distributors, construction managers, general contractors, subcontractors, architects, engineers and our clients.



### Construction

- Electrical construction
- Technology infrastructure
- Underground construction
- Design/build
- Renewable energy



### Design/Build

- Design
- Permitting
- Construction administration
- Value engineering
- Start-up



### Management

- Project management
- Project control
- Staff augmentation
- Global support



### Training

- On-site and classroom training
- BICSI RCDD
- BICSI DCDC
- BICSI OSP
- BICSI NTS

# Services we offer

## Exceptional work across a range of disciplines

In 1988, a group of highly skilled construction professionals came together to form BEI Construction, Inc., in Northern California. Initially focused on the technology industry, we've continued to expand our services in order to meet our clients' growing and changing needs.

Our design/build model allows us to deliver both superior work and competitive pricing, and we're proud to have established long-term relationships with all of our clients. In fact, more than half of our business each year comes from existing clients — further proof of our integrity and dedication.

## Electrical Construction

We do everything from complete industrial and commercial design/build projects to electrical system upgrades and expansions; from production machinery design and installation to power and distribution systems; from tenant improvements to civil work.

## Technology Infrastructure

We install high-quality audio/visual systems for smooth, reliable conferencing, displays, presentations and day-to-day communications. We design, install, test and maintain security, life safety, fire safety and intercom systems. We install voice, data and fiber optic cabling and wireless networks, all of which improve data security and accommodate growth.

## Underground Construction

BEI Construction provides directional boring and underground construction services to support our clients' building, electrical and energy projects.

## Design/Build

As a full-service design/build firm, BEI Construction has the capacity to take projects from start to finish — streamlining the process, enhancing collaboration and saving significant time and money for our clients.

## Renewable Energy

BEI Construction designs and builds a broad range of green-energy facilities and systems. We're dedicated to helping our clients lower their costs and carbon footprints by generating maximum power from the sun, alternative fuels and landfill gas — and efficiently storing it for times of peak demand.

# Representative client list



40+ School districts  
in California and  
50+ Cities and counties

# Electrical construction



## FULL-SERVICE DESIGN/BUILD ELECTRICAL CONTRACTOR

### Setting the standard for excellence

Our skilled professionals have planned and completed a wide range of electrical projects across the United States. We do everything from complete industrial and commercial design/build projects to electrical system upgrades and expansions; from production machinery design and installation to power and distribution systems; from tenant improvements to civil work. Our team has built exceptional relationships with vendors, utility representatives and other key stakeholders. We're able to work efficiently and cost-effectively for our clients.



# Electrical construction services



## **An electrical contractor you can trust**

Committed to quality, safety and competitive pricing, we employ only highly trained union electricians and supervisors, and all of our supervisors are OSHA 30 certified. What's more, we've pioneered ways to save our clients time and money while ensuring safety and code compliance.



## **Union quality guaranteed**

BEI Construction is an International Brotherhood of Electrical Workers (IBEW) Union electrical contractor, and we're proud to maintain affiliations with IBEW as well as the Operative Plasterers' and Cement Masons' International Association (OPCMIA) and the Laborers' International Union of North America (LIUNA).



## **Support for a range of vertical markets**

We provide electric construction services for a number of different industries and markets, including:

- Institutional
- DSA
- Commercial
- Technology
- Healthcare
- OSHPD
- Life science
- Hospitality
- Manufacturing
- Data center

# Electrical construction—sample project reports



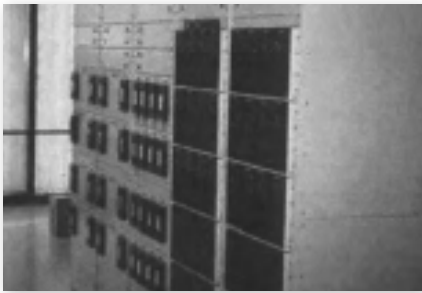
## **Livermore/Richmond RV, Boat and Storage** **Livermore/Richmond, CA** **Electrical and underground**

Design/build electrical construction for entire site and tenant improvement at both California locations.



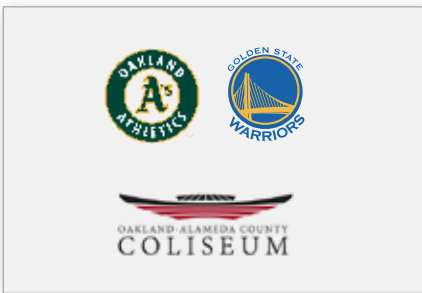
## **Santa Rita Jail Smart Grid** **Dublin, CA** **Electrical and underground**

The largest CERTS-based microgrid with large-scale energy storage. Medium voltage installation, underground construction and concrete foundations.



## **The GAP** **San Bruno, CA** **Electrical**

20+ projects at 5+ locations doing electrical in server room and data centers, with range of scope and specialty needs.



## **Warriors, A's and Oakland Coliseum** **Oakland, CA** **Electrical, horizontal boring and underground**

20+ projects including electrical, horizontal boring and low voltage of various size and scope.



## **AT&T Park** **San Francisco, CA** **Electrical**

Installed electrical panels and circuits.

# Technology Infrastructure



## DELIVERING STATE-OF-THE-ART TECHNOLOGY INFRASTRUCTURE

### Technology Infrastructure Services

With the growing need to specialize in the technology industry, we created our Technology Infrastructure Services Division. The goal was to meet the needs and challenges of our existing clients' technology needs through a complete understanding of their business processes and requirements. The result has lead to facilitating long-lasting relationships with all our clients.

### Services

- Complete Design/Build and Support of Technology Infrastructure
- IT Program Management
- Voice & Data Network Systems
- Wireless Network, Point-to-Point & In-Building Cellular
- Technology Infrastructure Relocation
- Voice & Data Circuit Provisioning
- Audio Visual, CATV, CCTV & Security Solutions
- Server Room, Data Center Design/Build
- Proprietary Grounding Audit, Engineering, Implementation & Remediation
- Voice, Data & Fiber Optic Cabling



# Technology Infrastructure services



## **Voice, data and fiber optic cabling**

From site surveys to solution design to installation and certification of copper and fiber optic cable systems, BEI Construction creates the highest-quality cable infrastructures to support our clients' needs.



## **Wireless**

With the change in business culture of people collaborating throughout the office space, wireless networks are now more important than ever. We furnish design, access point layout, cabling and device installation for all our clients. Our campus-environment clients utilize our expertise in Point-to-Point Wireless to meet their WAN needs.



## **Data Centers**

Data centers are mission-critical to the modern enterprise. BEI Construction has the experience to create advanced facilities that optimize uptime, improve data security and accommodate growth.



## **Audio/Visual**

We install high-quality audio/visual systems for smooth, reliable conferencing, displays, presentations and day-to-day communications.



## **Security**

Nothing is more important to companies than the safety of their personnel, equipment and facilities. The BEI Construction team is expert at designing, installing, testing and maintaining security, life safety, fire safety and intercom systems that mitigate risk and enhance peace of mind.

# Technology infrastructure—sample project reports



## **Stanford Health Care** **Palo Alto, CA and greater Bay Area** **Technology Infrastructure**

Since 2015, successfully completed projects for Stanford Health Care, directly and as a subcontractor for Swinerton. Provided services at facilities located throughout Northern California, from small adjustments to the complete redesign of their Sleep Center. Provided boring and fiber work, cabling of all kinds, electrical and validations to troubleshooting. Completed under OSHPD requirements.



## **Zynga - nationwide support** **San Francisco, CA** **Technology Infrastructure**

Since 2009, BEI Construction has completed over 160 projects for Zynga throughout the nation. These projects include project management, cabling of all kinds, WAPs, audio/visual, backbones, cell coverages, electrical, security, data center cabling, cellular antenna repeater systems and workstation cabling, among many other installations.



## **Twitter - international turnkey solutions** **San Francisco, CA** **Technology Infrastructure**

Design/build services for technology infrastructure.



## **Yelp HQ** **San Francisco, CA** **Technology Infrastructure**

Using a Panduit design, BEI Construction built a general cabling infrastructure project on over 10 floors of the building. The project consisted of over 3,500 cables, including IDF and server room buildouts, a 50M fiber backbone, wireless cabling, access point installations, audio/visual as well as a security installation.



## **Uber HQ** **San Francisco, CA and nationwide** **Technology Infrastructure**

BEI Construction was responsible for this design/build Panduit CAT6A cable infrastructure project consisting of over 1,500 cables, the IDF and server room buildouts, single mode fiber backbone, wireless cabling, access point installation, audio/visual as well as security. BEI Construction's relationship with UBER is so strong that we are acting as the Owner's Representative on a national basis.

# Underground construction



## MEETING THE UNSTOPPABLE DEMAND FOR BOTH BROADBAND AND POWER

### Directional boring and underground construction

BEI Construction provides directional boring and underground construction services to support our clients' building, electrical and energy projects. We use the latest technologies to ensure that we perform our work with precision and efficiency — and that projects are completed on time and within budget.

### Consider directional drilling for:

- Vehicle charging stations
- Solar PV installations
- School playgrounds
- Parking lots
- Park settings
- Golf courses
- Decorative hardscape
- Undisturbed pathways, product entry, exit locations



# Underground construction services



## Horizontal boring / dry and wet utilities

With directional drilling services, we can bore over, under and around buried utilities and under and around buildings to create safe and efficient conduits for gas, water, electrical and telecommunications cables.



## Trenching

We're equipped to dig trenches in all types of environments, from dense urban areas that require deep trenching to rural areas more suited to long-haul trenching.



## Vacuum excavation

A technology that uses a high-velocity air stream to break up and remove soil, vacuum excavation is one of our preferred ways to dig quickly and efficiently without damaging underground utilities.



## Union affiliation

We're affiliated with the Laborers' International Union of North America (LIUNA), ensuring that our underground work is performed to the highest industry standards of quality and safety.

# Underground construction—sample project reports



**Livermore/Richmond RV, Boat and Storage**  
**Livermore/Richmond, CA**  
**Electrical and Underground**

Design/build electrical construction for entire site and tenant improvement at both California locations.



**Santa Rita Jail Smart Grid**  
**Dublin, CA**  
**Electrical and Underground**

The largest CERTS-based microgrid with large-scale energy storage. Medium voltage installation, underground construction and concrete foundations.

# Design/Build



## WE TAKE CONSTRUCTION PROJECTS FROM CONCEPT TO COMPLETION

### Full service

As a full-service design/build firm, BEI Construction has the capacity to take projects from start to finish — streamlining the process, enhancing collaboration and saving significant time and money for our clients.



### Blymyer Engineers, Inc. is BEI Construction's sister company.

BEI Construction and sister company Blymyer Engineers successfully combine services to provide our clientele with the full range of engineering services coupled with sound engineering practices and years of experience.



# Design/Build services



McKenzie Power Plant | Galt, CA 2013 | 30 MW



## **Solar**

Since 2003, our team is approaching 100 megawatts of installed photovoltaic power systems. Our services include site evaluation, energy modeling and production analysis, all engineering disciplines, ground-mount, parking canopies and single access trackers.



## **Technology infrastructure**

With services including voice, data and fiber optic cabling, wireless, data centers, audio/visual systems and security systems, we create state-of-the-art technology infrastructure.



## **Full-service engineering**

With a deep bench of engineering talent, we offer expertise in mechanical engineering, electrical engineering, lighting design, photometry and Title 24 compliance, power distribution and system architecture, verification of all load calculations and equipment matrix data, and emergency generator and UPS systems.



## **Civil and structural engineering**

We use the leading software applications for visual construction design, including AutoCAD for 2D and 3D drawing and REVIT for Building Information modeling (BIM).

Experts in solar energy, industrial facility design and environmental services, Blymyer Engineers is a full-service industry leader closely associated with BEI Construction. Our two companies operate independently except when we collaborate on design/build projects.

# Design/Build—sample project reports



## **County of San Mateo Data Center** **San Mateo, CA** **Data Center**

Electrical, structural and mechanical engineering as well as construction of emergency services data center.



## **DC Solar** **Benecia, CA** **Design/Build**

Electrical engineering and complete power, lighting and controls for this tenant improvement project involving a warehouse, manufacturing and office space.



## **City of Palmdale** **Palmdale, CA** **EPC for City of Palmdale**

Complete PV installations at 8 sites for the City of Palmdale, California. Mixed ground-mount and canopy-mount arrays. One megawatt total. Turnkey services and ongoing O&M.



## **Twitter** **International** **Design/Build, Technology infrastructure**

Since 2011, multiple projects including providing design services, project management, cabling, audio/visual, PDUs and security for Twitter offices located in Mountain View, San Francisco, Chicago, New York and Japan.



## **Uber** **International** **Design/Build, Technology infrastructure**

Since 2013, ongoing projects include fiber and copper cabling, plenum, Cat5/Cat6/6A cabling, audio/visual, security, WAPs, data center, cabinets, IDF buildouts, upgrades, project management and other scopes for UBER offices throughout the US, Canada and the UK.



# Renewable energy



## CREATING CLEAN-ENERGY SOLUTIONS FOR A SUSTAINABLE FUTURE

### Clean-energy facilities and systems

BEI Construction designs and builds a broad range of clean-energy facilities and systems. We're dedicated to helping our clients lower their costs and carbon footprints by generating maximum power from the sun, alternative fuels and landfill gas — and efficiently storing it for times of peak demand.



# Renewable energy services



## **Solar**

Since 2003, our team is approaching 100 megawatts of installed photovoltaic power systems. Our services include site evaluation, energy modeling and production analysis, all engineering disciplines, ground-mount parking canopies and single access trackers.



## **Energy storage**

Our battery storage projects — which have ranged in scope from 35 kilowatts to 2 megawatts — lower costs for our clients by reducing or eliminating demand charges while also creating a backup energy source.



## **CNG fueling stations**

We have extensive experience building fueling systems and performing maintenance facility upgrades for alternative fuel vehicles that use compressed natural gas (CNG) as their energy fuel source.



## **Landfill gas**

We have design/build experience with landfill gas. For example, the Clover Flat Landfill near Calistoga, CA, is now converting the methane gas produced by the landfill into electricity. The gas is channeled through a purification process before entering into a GE Jenbacher engine where the gas is converted into electricity and tied into PG&E's grid for 1 megawatt of power.

# Renewable energy—sample project reports



**Tesla/Gap**  
**1 MW/2MWh**  
**Renewable Energy/Solar**

Battery plant. Design/build.



**Solar City/Intel Folsom**  
**6MW solar and 1MW/2MWh battery**  
**Renewable Energy/Solar**

Electrical construction including battery plant, solar and parking canopies.



**Constellation Energy**  
**California statewide**  
**Operations and Maintenance**

Testing and maintenance on photovoltaic solar installations throughout the state.



**Clover Flats**  
**843kW**  
**Renewable Energy/Biomass**

Electrical installation, medium voltage, electrical, underground construction and civil concrete foundations.



**Merritt College**  
**1.2MW**  
**Renewable Energy/Solar**

Electrical and underground construction for ground- and canopy-mounted arrays. California Division of the State Architect (DSA).

# Certifications

## Certifications and affiliations:

State of California License No. 528322, A, B and C-10.



## What our clients have to say:



*Outstanding Service and Safety on the Morgan Hill USD PV Project Presented to BEI Construction, Inc.*

**—Chevron Energy Solutions**



*"We're impressed with both the level of quality and the exceptional service we've experienced with BEI Construction. They've been highly responsive to our needs and our questions, and they've helped us complete our project on time and within our budget."*

**—Dan Ryan, Advisory Systems Engineer, I.T. Facilities, County of San Mateo, Information Services Dept.**





## Licenses & manpower

BEI Construction is a privately held California corporation. We currently have an aggregate bonding capacity of \$12 million. BEI Construction's staff includes an elite group of career professionals and operations personnel in construction, design, installation and project management. We retain the services of specialty subcontractors, as needed, to supplement our in-house personnel. We have developed long-term relationships with our subcontractors to ensure quality and consistency. Our excellent vendor-based record has enabled BEI to establish relationships with the best suppliers throughout the United States.



## Engineering

BEI Construction, Inc. and sister company Blymyer Engineers, Inc. successfully combine services to provide our clientele with the full range of engineering services. Coupled with sound engineering practices and years of experience, Blymyer Engineers' approach involves complete inclusion of the client and the client's organization. Its engineering capabilities include:

- Civil Engineers
- Electrical Engineers
- Environmental
- Mechanical Engineers
- Structural Engineers
- Energy Analysis



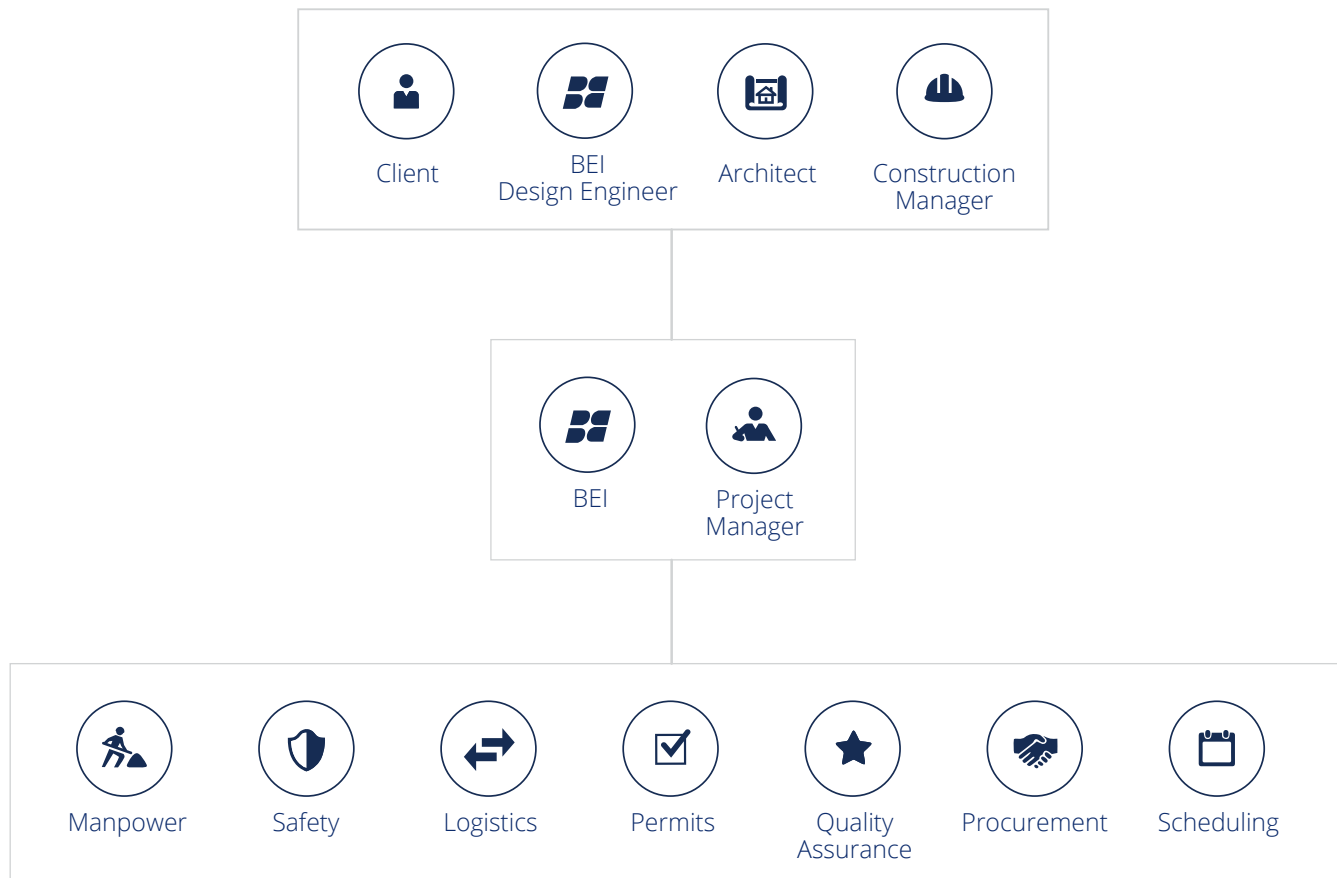
## Engineering Success

Over the years, we have successfully completed thousands of projects in a broad range of industries. Whether the job involves a small modification to an existing plant or a completely new facility, BEI Construction and Blymyer Engineers have both the depth and flexibility to meet clients' needs quickly and effectively.

As BEI Construction and Blymyer Engineers share the same physical facilities, projects completed jointly are seamless. The usual delays and frictions common between architect/engineer firms and construction firms are simply not applicable.

# Project management approach

## PROJECT TEAM



We can handle projects in phases or as a complete package.

### Project manager

A project manager who is responsible for all aspects of the project is assigned to each job. All project requirements are reviewed with the project team to ensure that project information is fully understood by all.

Management/Operations meetings are held weekly to discuss and review project execution, safety, quality control, schedule and cost in relation to the size, current project status, duration, complexity and nature of the project.

# Quality assurance/Health and safety

## Experience

BEI Construction's highly experienced support staff uses computerized project tracking to manage field activities. Professional cost engineers and job cost accountants are provided to support projects on an as-needed basis. Daily scheduling and job cost reporting from the field allow strict cost control. This cost control provides the information required for management decision making and keeps clients well-informed. We provide timely and accurate billings while maintaining the project budget and on-time delivery.

## Quality assurance

BEI Construction believes in providing our clients with only the highest-quality materials and services. BEI Construction has a vendor approval process based on several factors including review of written vendor Quality Assurance documentation, vendor purchasing procedures and vendor incoming inspection criteria. BEI Construction's electricians and technicians are trained in the latest design and installation techniques. Hands-on training is periodically provided via training programs and seminars.

- Craftsmanship
- Extended warranty
- Emergency services

## Health and safety

BEI Construction's staff are fully trained in all aspects of quality assurance principles. Employees are periodically trained in the latest procedures for the following:

- BEI Construction's materials standards
- Materials specifications
- Incoming quality inspections
- Return-to-vendor tracking and procedures

We implement an Injury Illness Prevention Plan (IIPP) concerning daily work activities and potential hazards for all company employees. The corporate IIPP manual provides all employees with detailed descriptions of typical scopes of work, instructions to safely carry out each task associated with individual work assignments, and preventive measures necessary to complete the work assignments in a productive and safe manner.

*Safety for its employees is one of BEI Construction's core concerns. With a comprehensive and detailed safety plan (IIPP), weekly or daily safety meetings, a policy of rewarding employees for continued safety training and our requirement that all core foremen receive 30 hours of OSHA training, BEI Construction's safety policies are realized from the top down. BEI Construction's is justifiably proud of our current EMR rate of .67 (or 67%).*





## Bicsi: Telecom Industry's nonprofit trade association

BEI Construction is a Corporate Member of BICSI and certified by BICSI, the worldwide association for cabling design and installation professionals.

## Teaching others to be the best

At BEI Construction, we don't just design and build state-of-the-art projects — we teach other professionals how to do the same. Our staff includes some of the industry's best design instructors, including one of very few people in the world to have the following four telecommunications certifications: RCDD, DCDC, OSP and NTS.

## We are a BICSI / Tier 4 certified training provider.

Dave Sanders, our Vice President of Technical Solutions, is one of five people in the world to have, and is one of the only instructors in the world to teach, the following four certifications:

## Telecommunications credentials:



*Registered  
Communications  
Distribution  
Designer*



*Data  
Center  
Design  
Consultant*



*Outside  
Plant  
Designer*



*Network  
Technology  
Systems  
Designer*

### **Learn more about individual and group training opportunities**

Whether you're a seasoned professional or you're just starting out in the industry, our training courses offer a great way to further your career. Contact us today to enhance your education.

### **BEI scholarships**

We care deeply about the future of engineering, and we enjoy the chance to nurture and give back to our peer community. That's why we offer thousands of dollars in scholarships to engineering professionals who wish to take our certification classes.

## Meet the instructor

Dave Sanders, Vice President Technical Solutions, BEI Construction  
RCDD/DCDC/OSP/NTS

A world-class speaker and trainer, Dave Sanders has authored and maintained a course that was named International RCDD Class of the Year — and that's just one of his many training programs.



Dave is an International RCDD Instructor of the Year and Telecommunications Speaker of the Year. He has successfully taught several hundred of the world's 7,000 RCDD-certified professionals, and he leads 80%-90% of his students to pass their BICSI exams. Dave has a passion for showing his students, audiences, customers and co-workers how to make every engineering mission possible.

## Industry awards for Dave Sanders



**International RCDD  
Instructor of the Year,  
2014, 2010, 2004**



**Telecommunications  
Speaker of the Year -  
Cabling Magazine,  
2006**



**Changing Lives Award -  
Cabling Magazine,  
March 2013**



**International RCDD  
Instructor of the Year,  
2010**

**Bicsi.org**

*Advancing the tech community*

**Find out more about BICSI certifications and to see what new classes Dave Sanders is teaching.**

**Visit [BEIConstruction.com/training](http://BEIConstruction.com/training)**



Setting industry standards  
for data and technology  
infrastructure



We work around the clock for you.



**BEI**  
CONSTRUCTION, INC.

**BEI Construction, Inc.**

1101 Marina Village Parkway, Suite 100  
Alameda, CA 94501

**Our Offices:**

Alameda, California  
Irvine, California  
Rocklin, California

Bend, Oregon  
Honolulu, Hawaii  
Odessa, Ukraine

**BEIConstruction.com**

(510) 521-3792